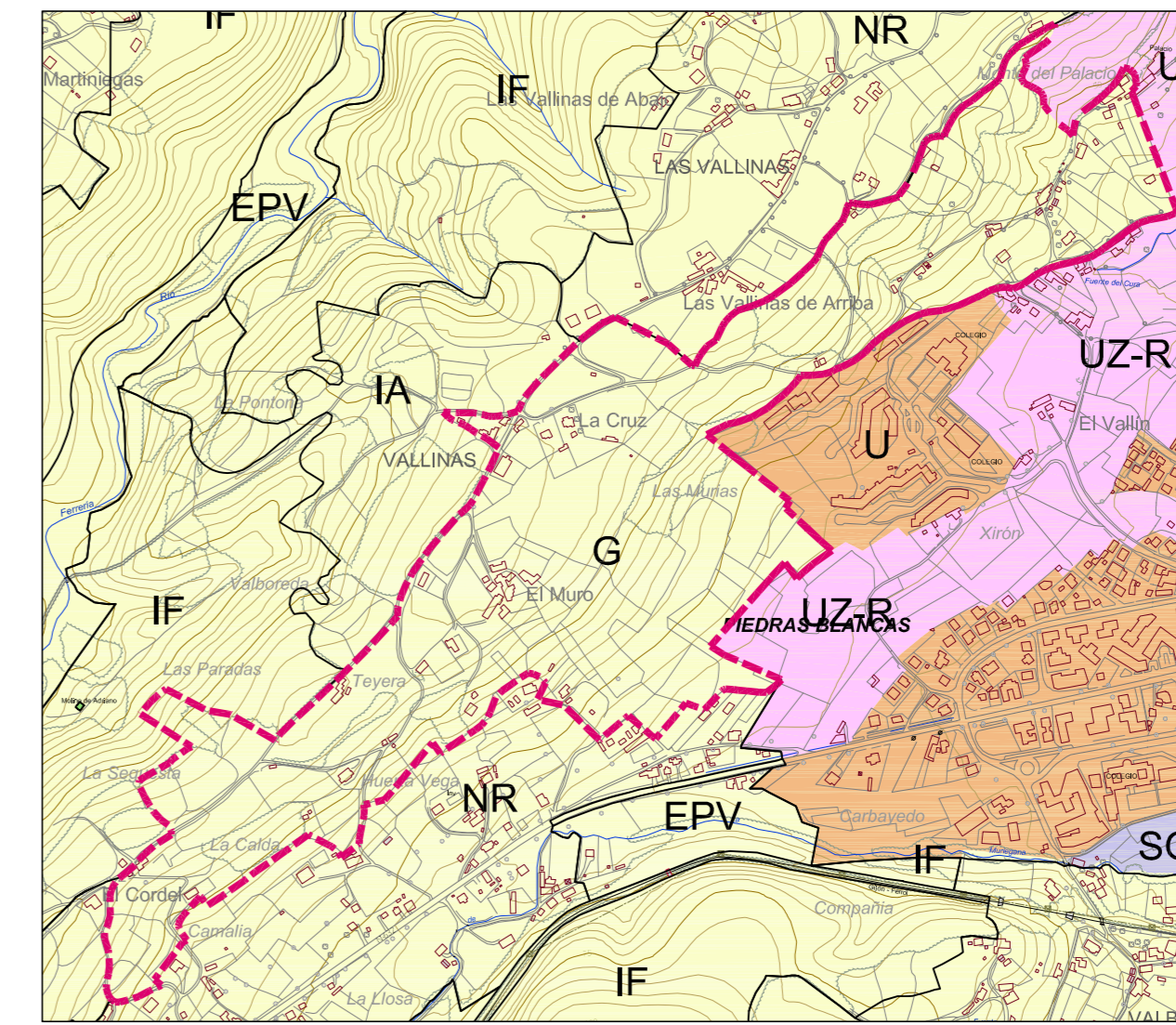
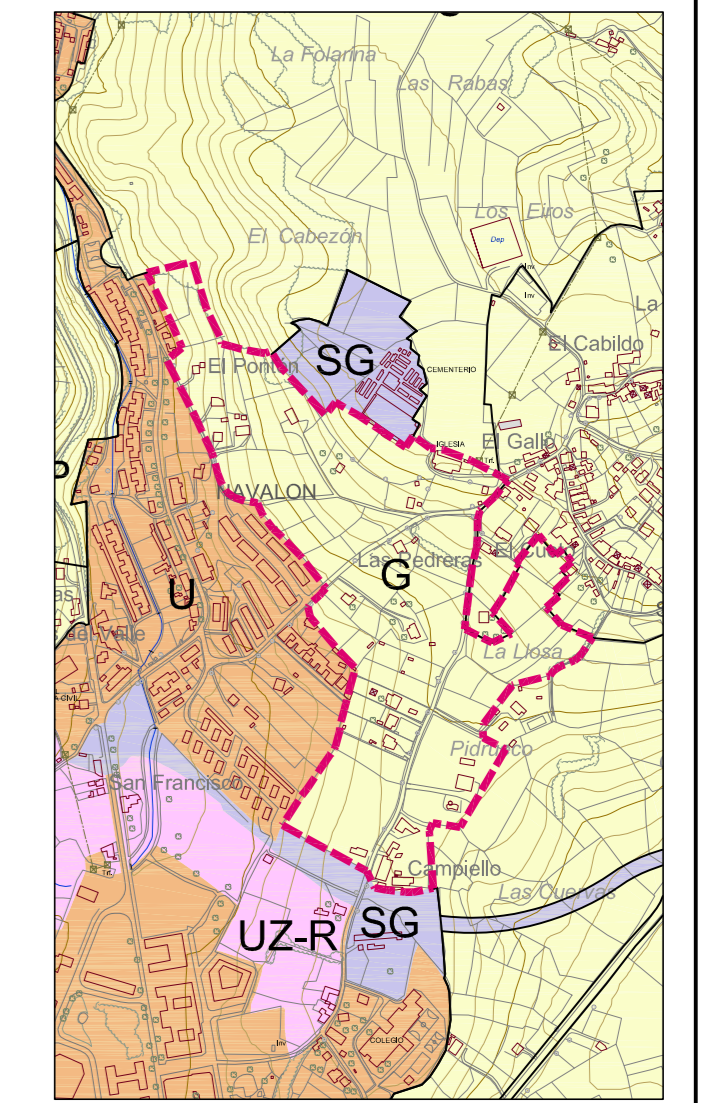


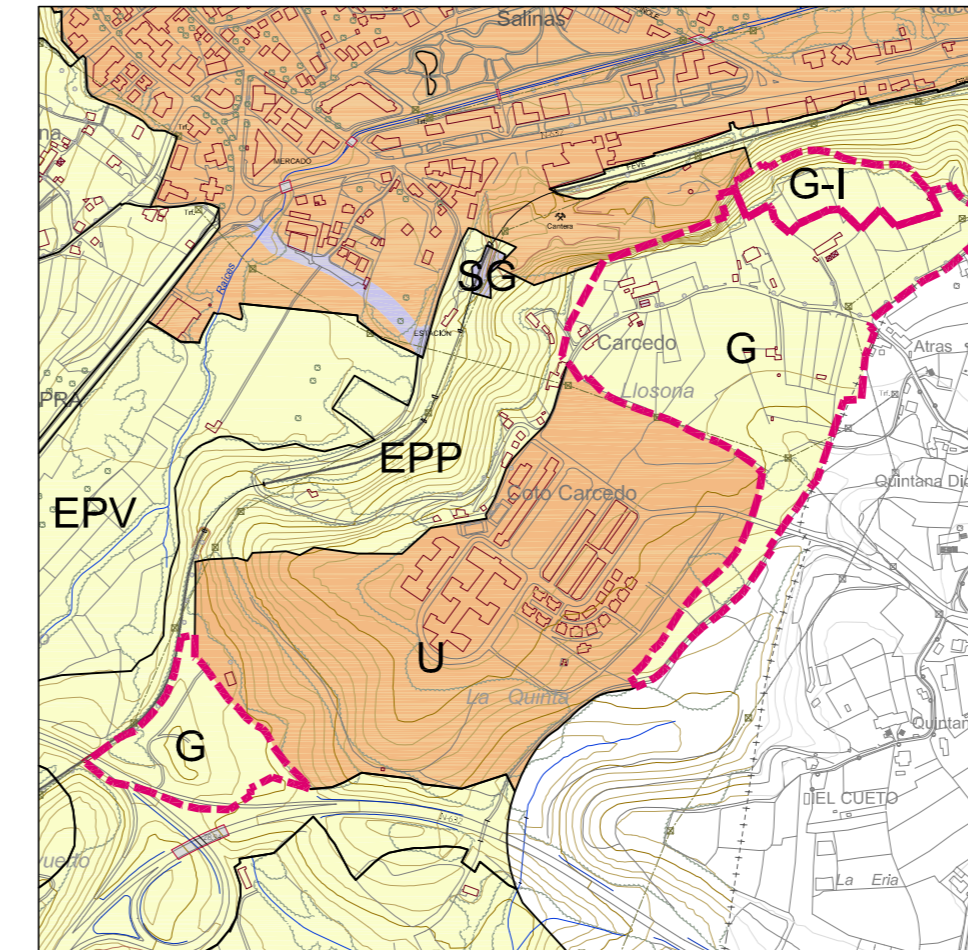
G-01 "EL PRADÓN"



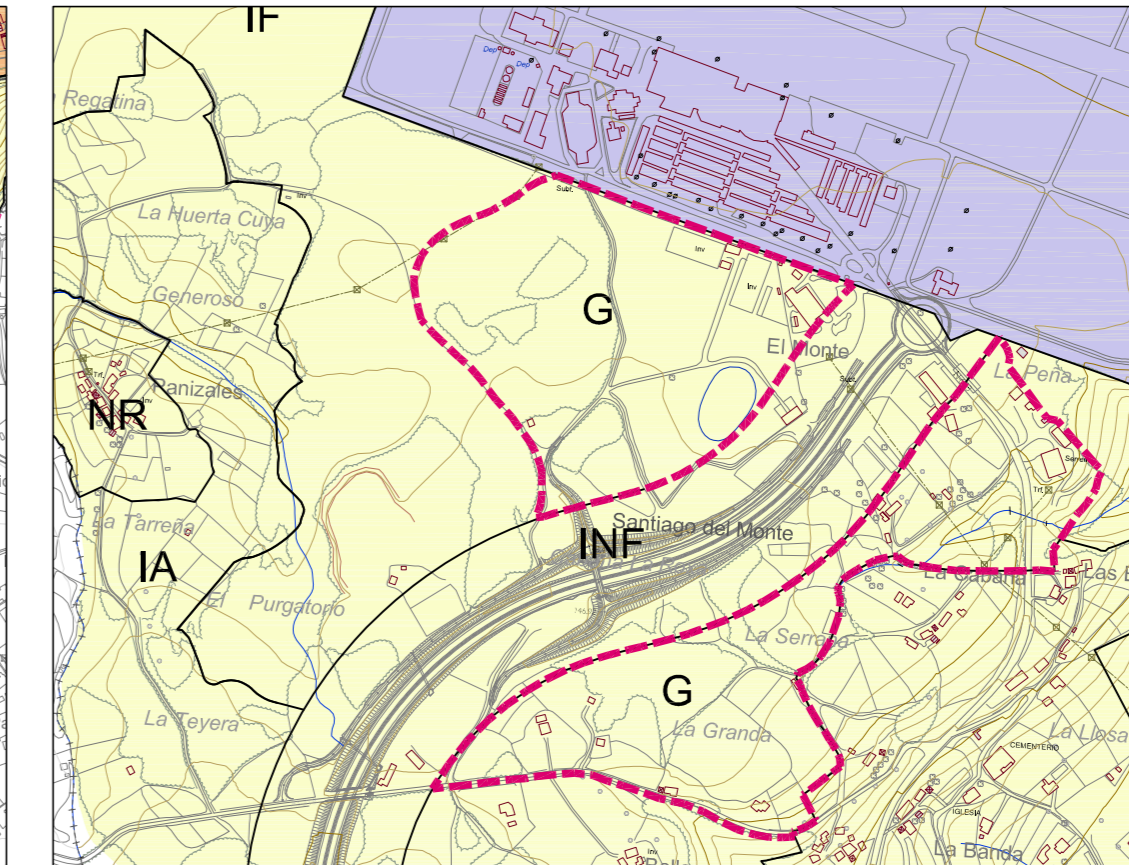
G-02 "EL MURO"



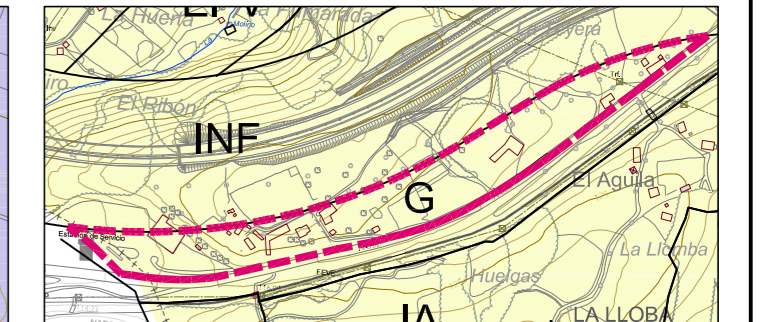
G-03 "S.MARTÍN DE LASPRA"



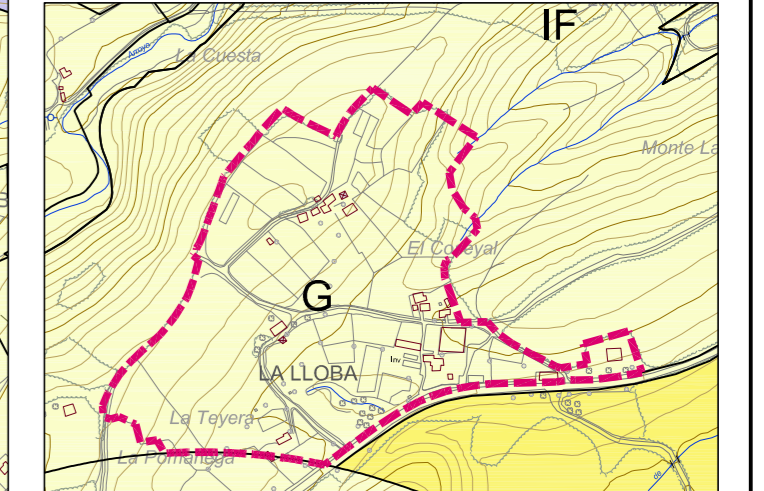
G-04 "LA VEGONA"  
G-05 "CARCEDO"  
G-06 "LA CANTERA"



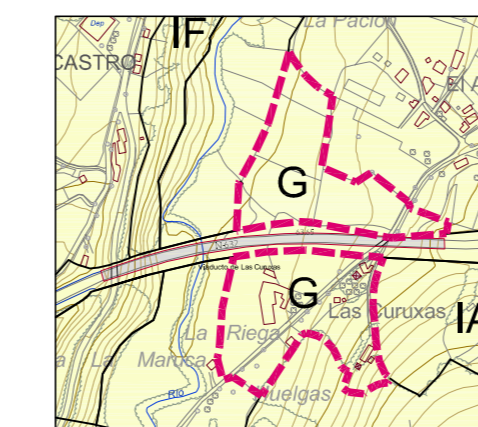
G-07 "AEROPUERTO"



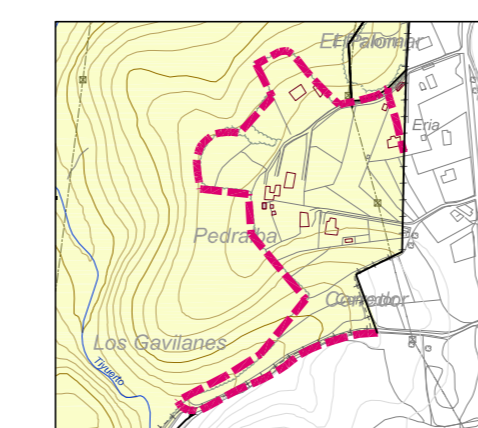
G-08 "EL ÁGUILA"



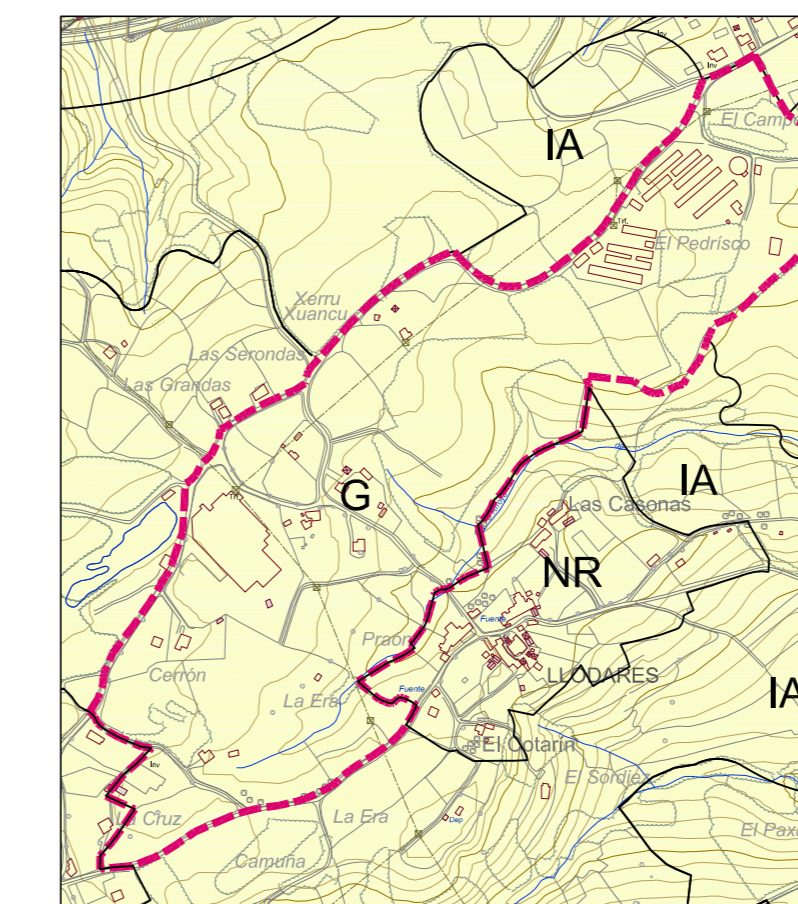
G-09 "LA LLOBA"



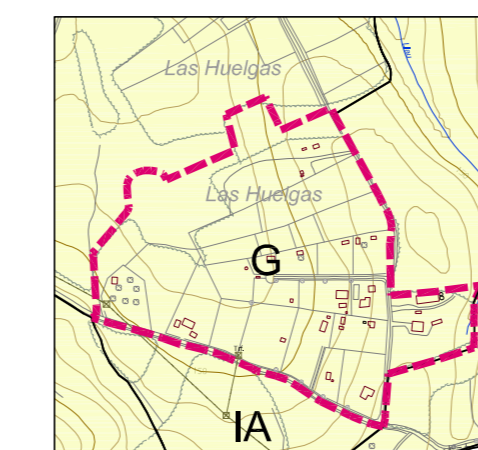
G-10 "LAS CURUXAS"



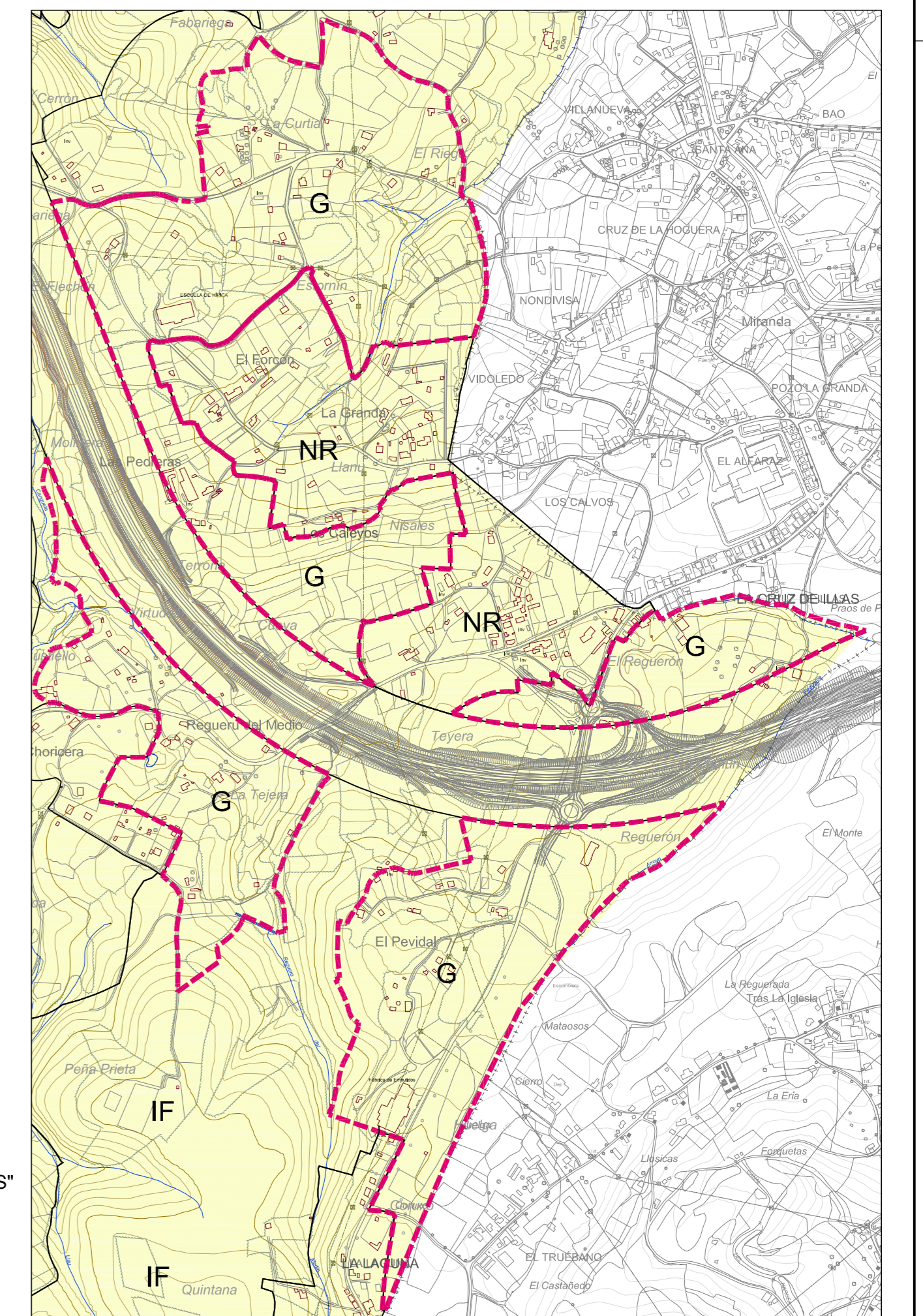
G-11 "LA BOTERA"



G-12 "EL PEDRISCO"



G-17 "LAS HUELGAS"

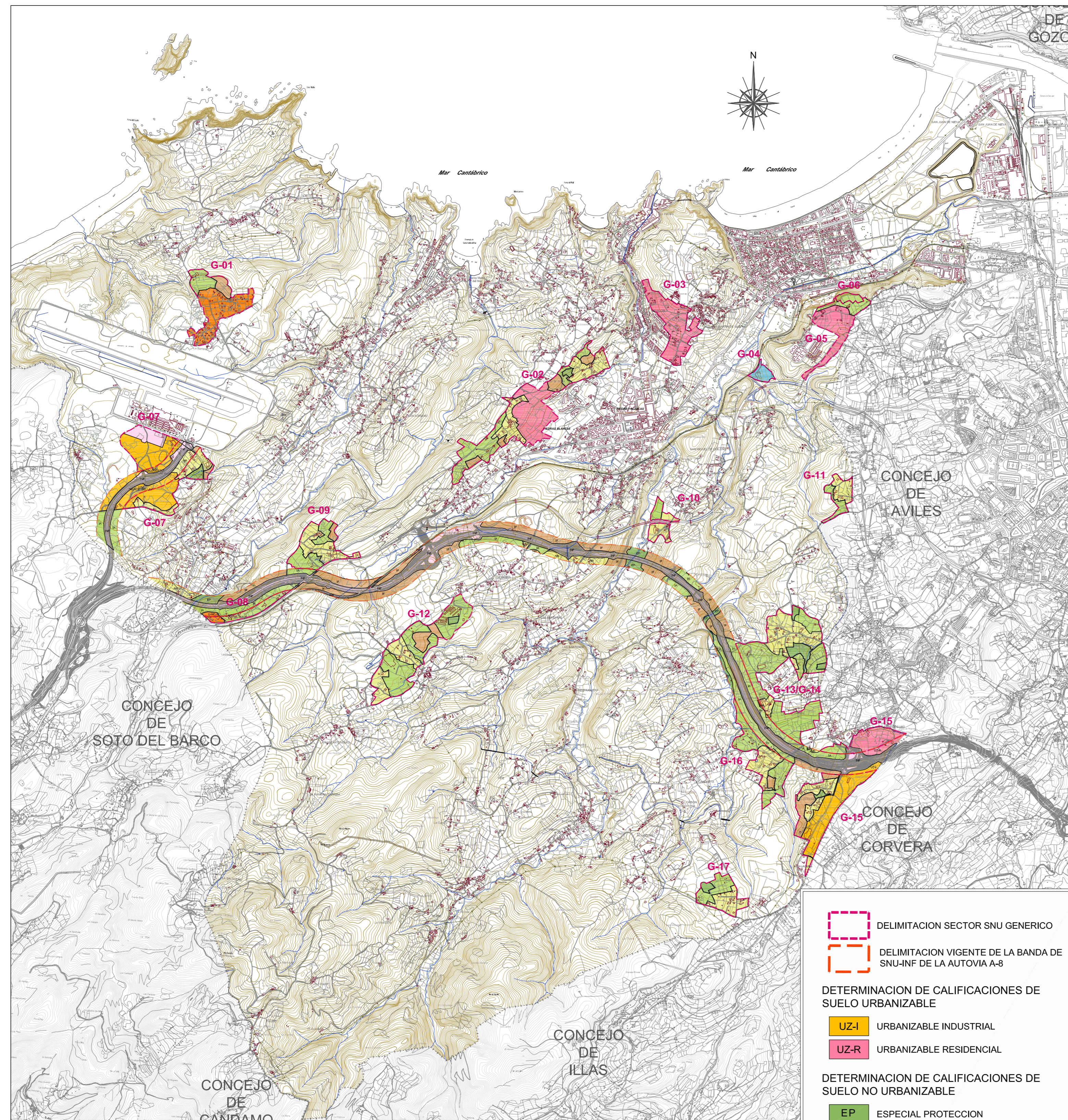


G-13 / G-14 "LA CURTIA" / "LAS PEDRERAS"  
G-15 "LA CRUZ DE ILLAS"  
G-16 "REGUERO DEL MEDIO"

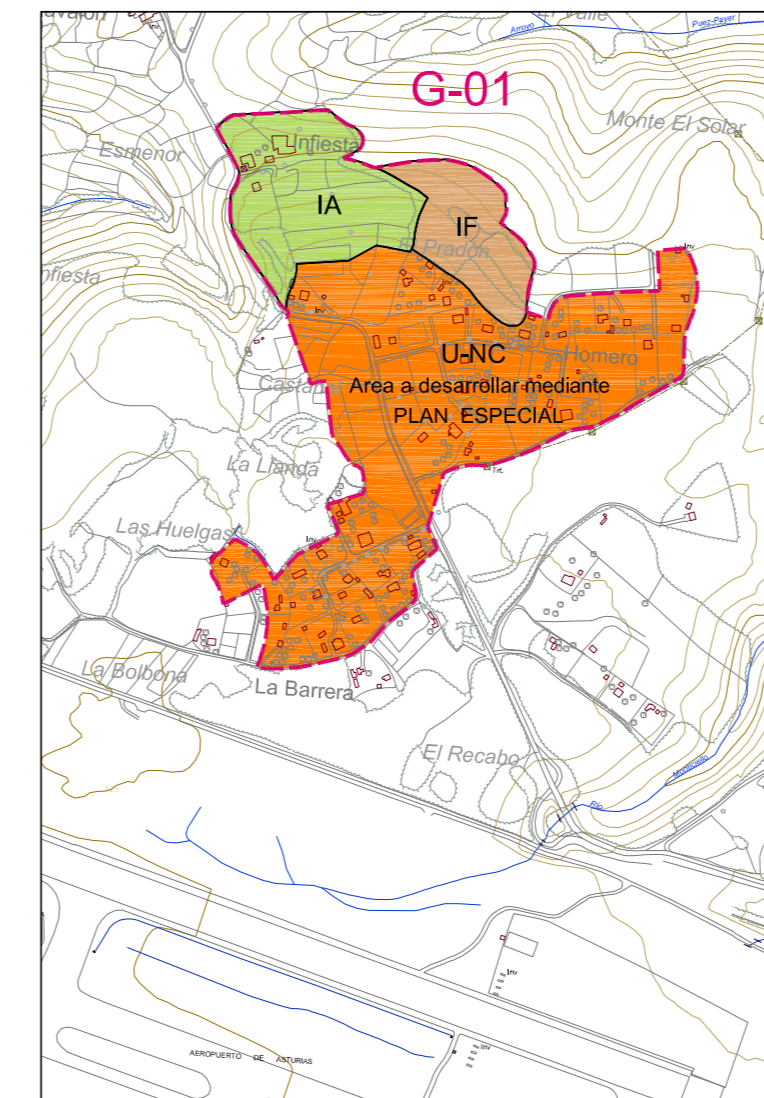
CLASIFICACIÓN DEL SUELO	
U	SUELO URBANO
UZ-R	SUELO URBANIZABLE RESIDENCIAL
UZ-I	SUELO URBANIZABLE INDUSTRIAL
SG	SISTEMA GENERAL
SUELO NO URBANIZABLE	
C	- SNU de Costas
IA	- SNU de Interés Agrario
G	- SNU Genérico (G) - Genérico Industrial
EPP	- SNU de Especial Protección Paisajística
IF	- SNU de Interés Forestal
NR	- Núcleo Rural
EPV	- SNU de Especial Protección de Vega
INF	- SNU de Infraestructuras
(E)	- Equipamiento en SNU

Dib. y Contab.: CCG 16/03/2012-10:57 2440-2509-0110101\_00.dwg

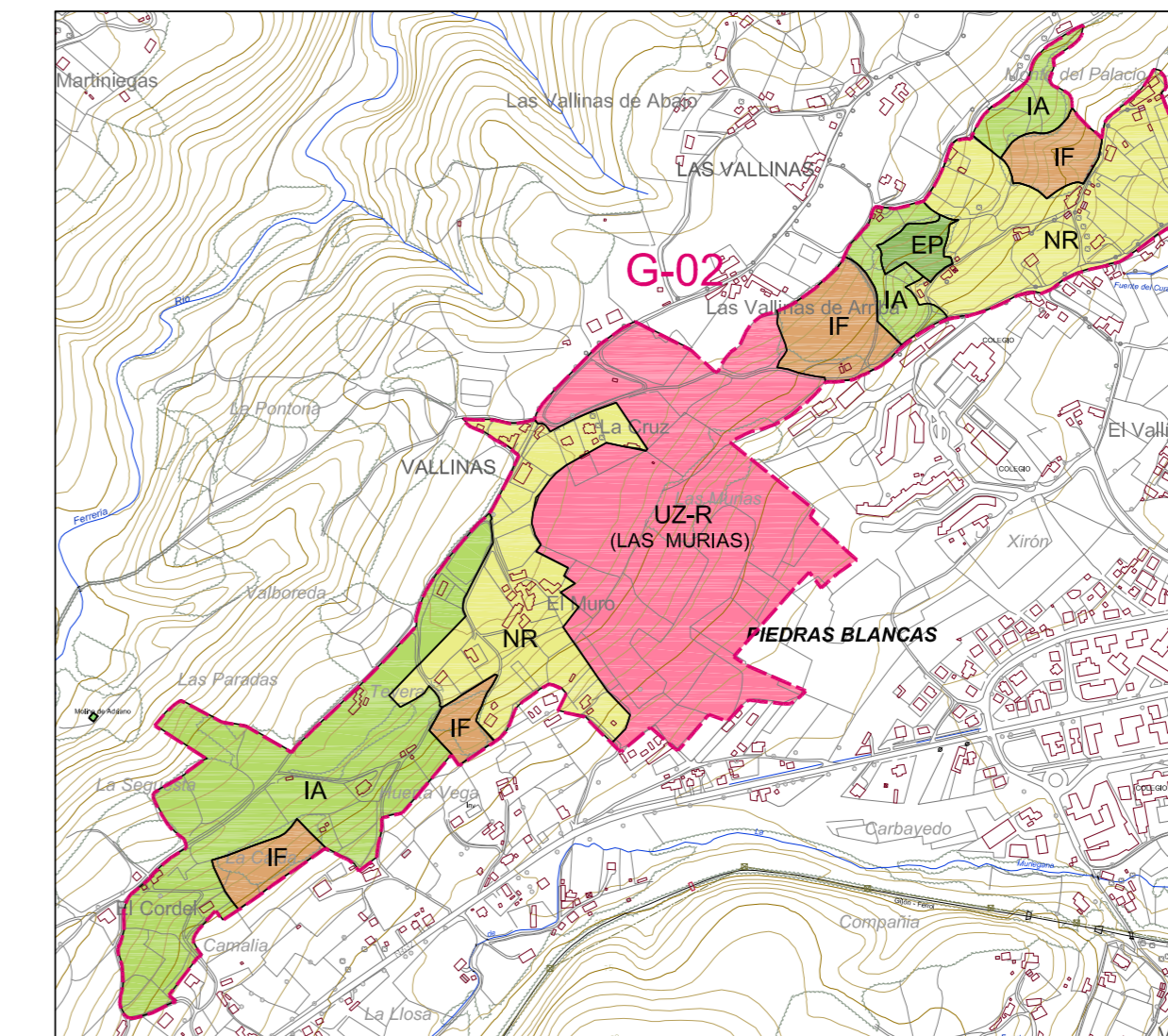




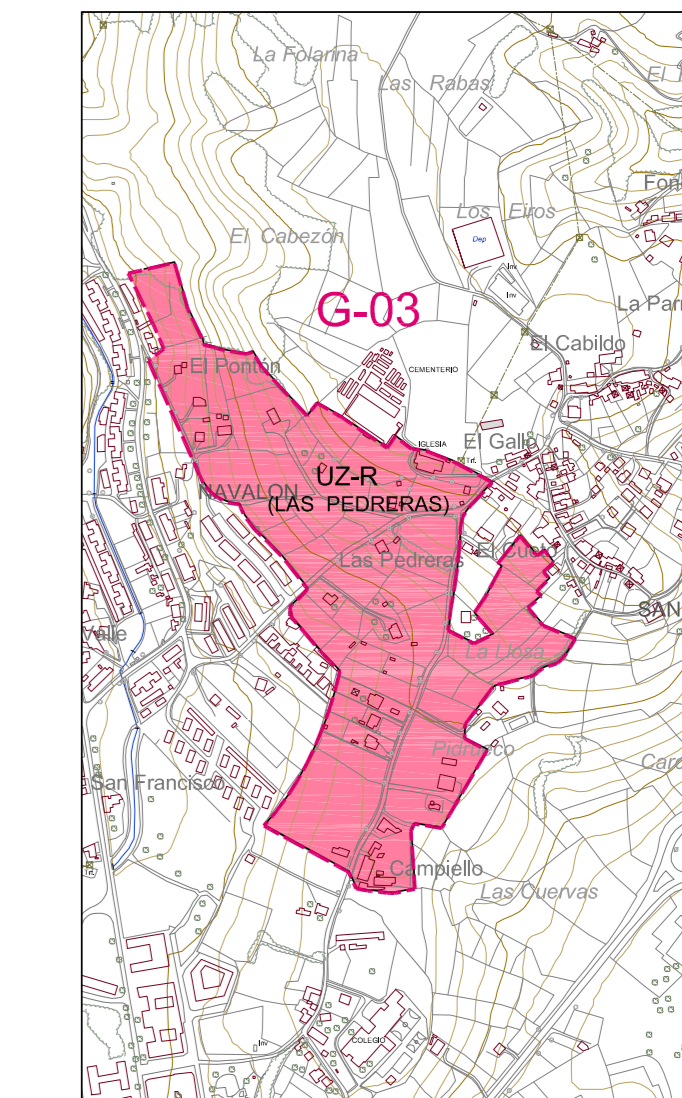
- DELIMITACION SECTOR SNU GENERICO
- DELIMITACION VIGENTE DE LA BANDA DE SNU-INF DE LA AUTOVIA A-8
- DETERMINACION DE CALIFICACIONES DE SUELO URBANIZABLE**
- UZ-I URBANIZABLE INDUSTRIAL
- UZ-R URBANIZABLE RESIDENCIAL
- DETERMINACION DE CALIFICACIONES DE SUELO NO URBANIZABLE**
- EP ESPECIAL PROTECCION
- INF INFRAESTRUCTURAS
- IA INTERES AGRARIO
- IF INTERES FORESTAL
- NR NUCLEO RURAL
- (E) EQUIPAMIENTO EN SNU FUERA DE NUCLEO
- DETERMINACION DE CALIFICACIONES DE SUELO URBANO**
- U URBANO CONSOLIDADO
- U-NC URBANO NO CONSOLIDADO
- SG SISTEMA GENERAL



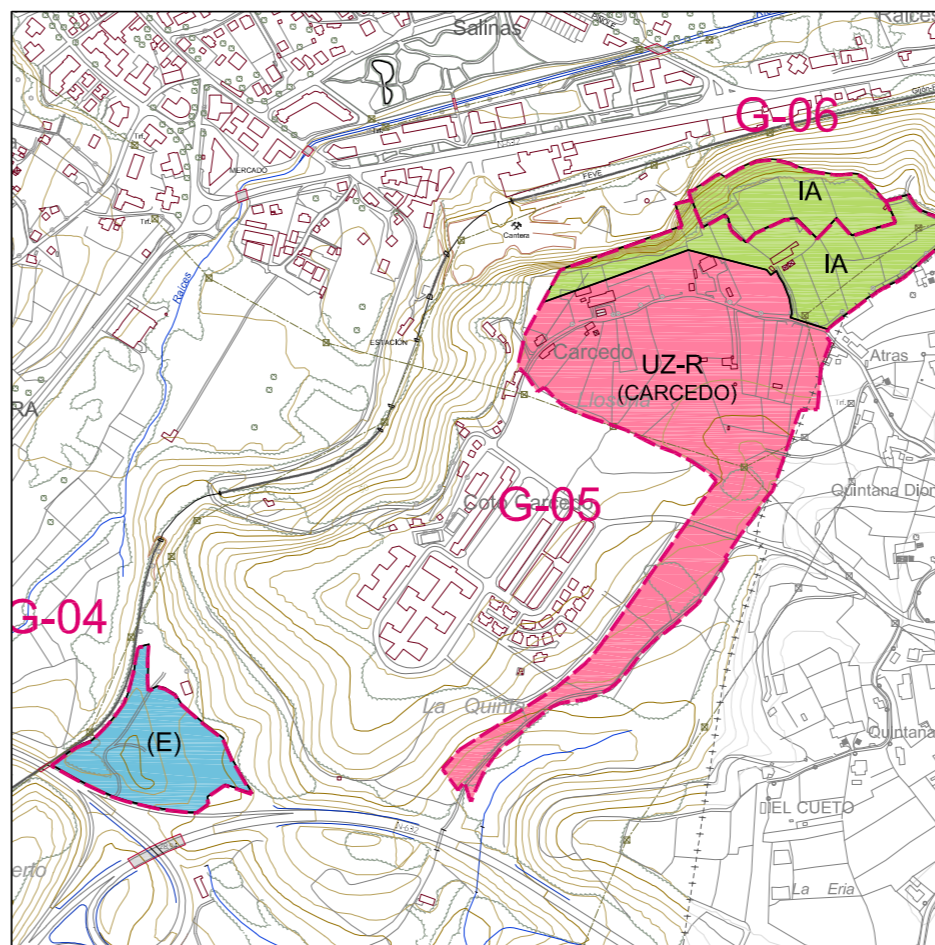
G-01 "EL PRADÓN" 215.832 m<sup>2</sup>



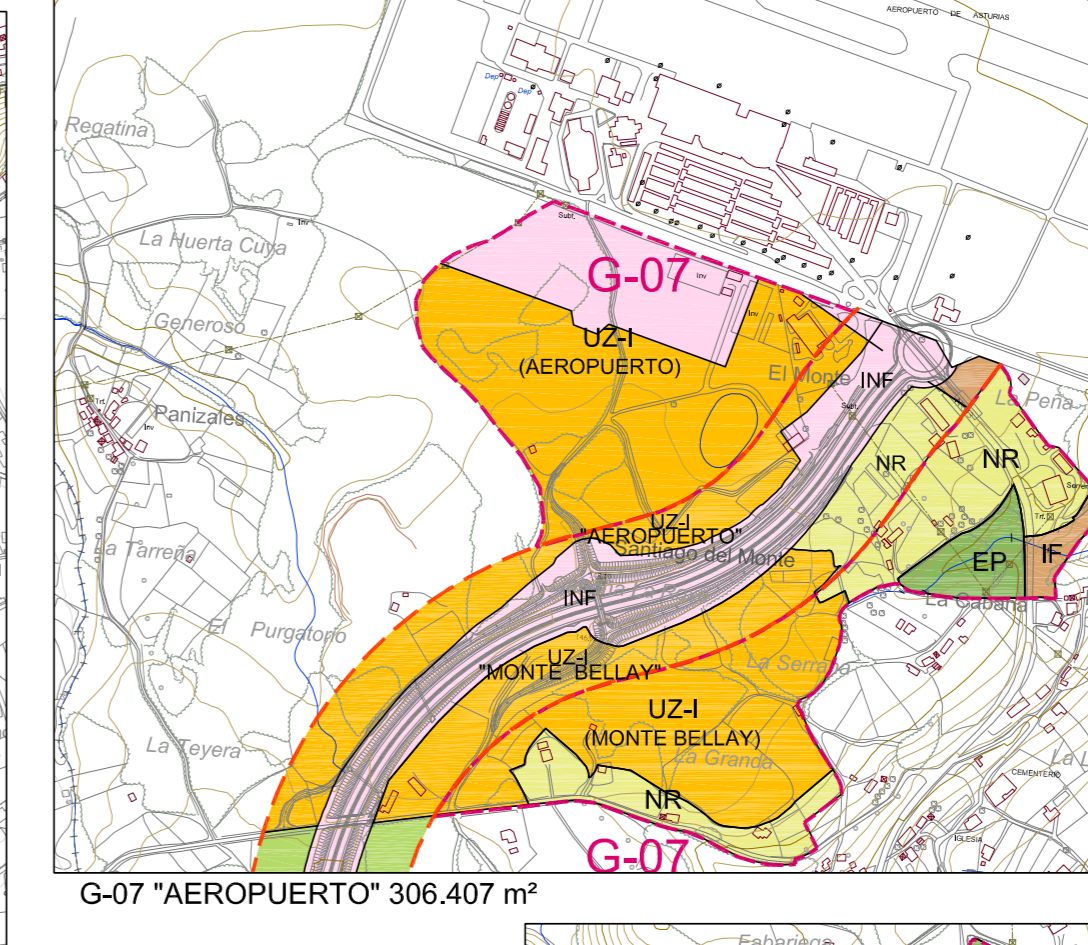
G-02 "EL MURO" 459.131 m<sup>2</sup>



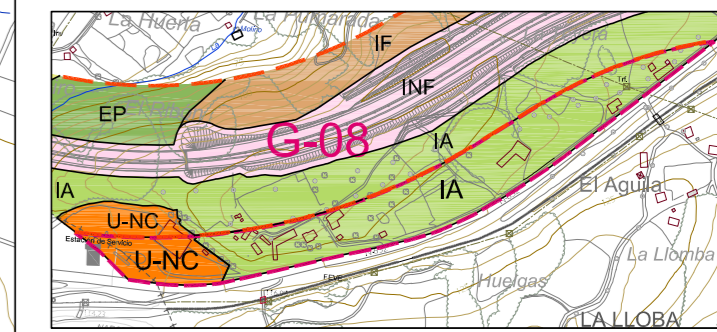
G-03 "S. MARTÍN DE LASPRA" 177.458 m<sup>2</sup>



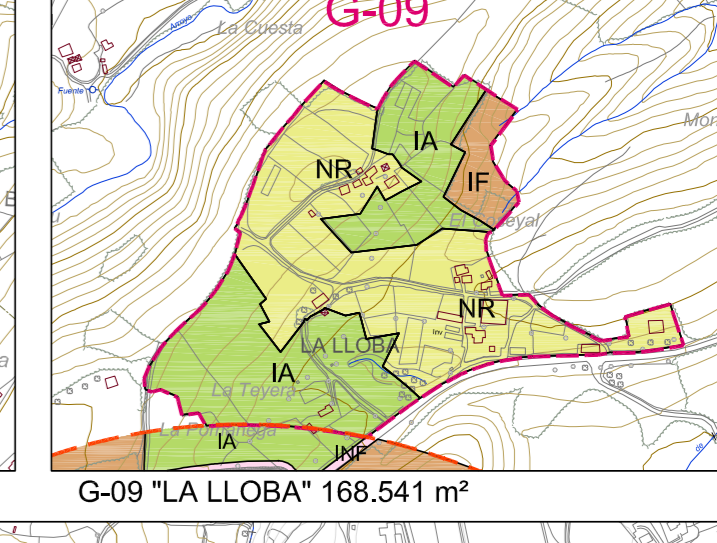
G-04 "LA VEGONA" 25.428 m<sup>2</sup>  
G-05 "CARCEDO" 145.381 m<sup>2</sup>  
G-06 "LA CANTERA" 18.608 m<sup>2</sup>



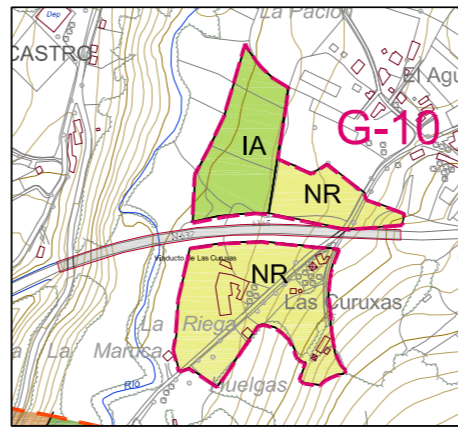
G-07 "AEROPUERTO" 306.407 m<sup>2</sup>



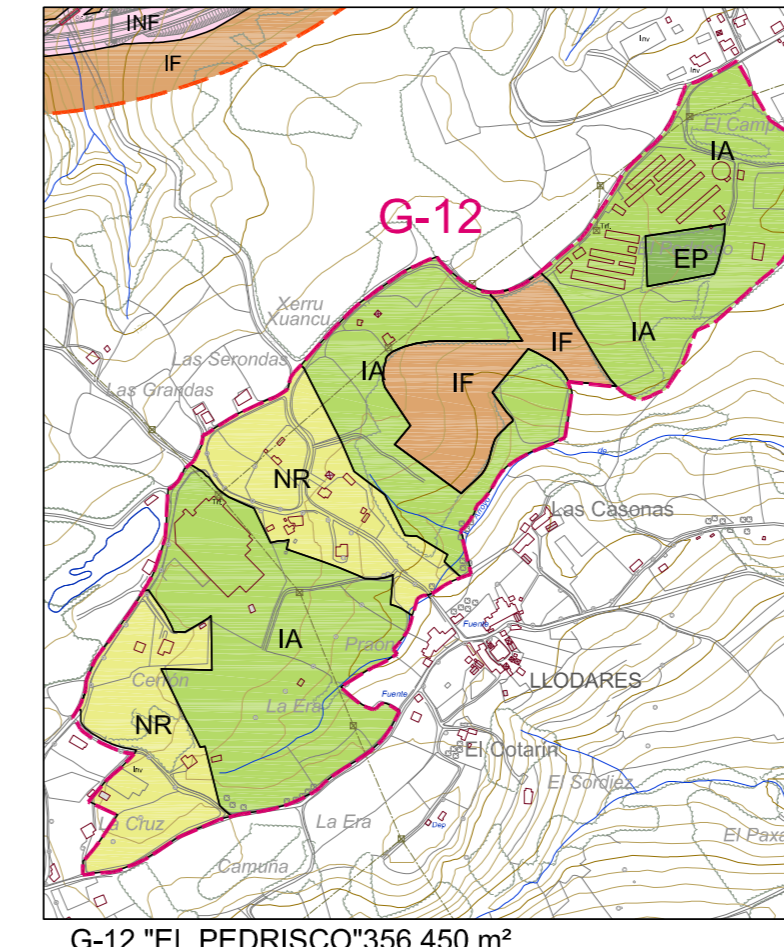
G-08 "EL ÁGUILA" 53.771 m<sup>2</sup>



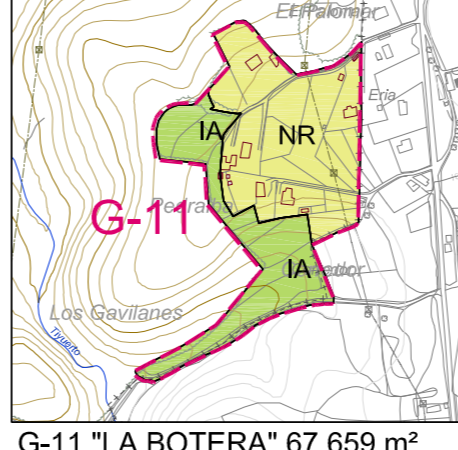
G-09 "LA LLOBA" 168.541 m<sup>2</sup>



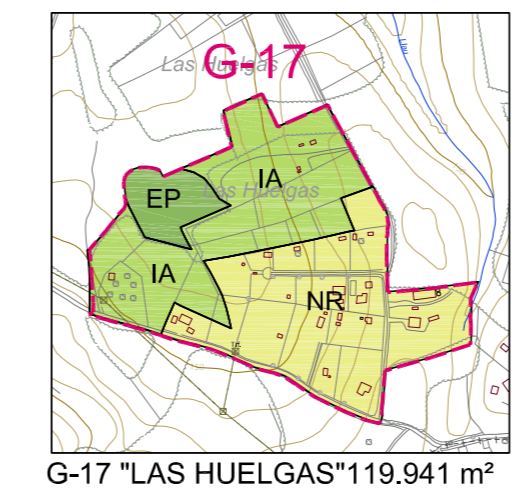
G-10 "LAS CURUXAS" 58.555 m<sup>2</sup>



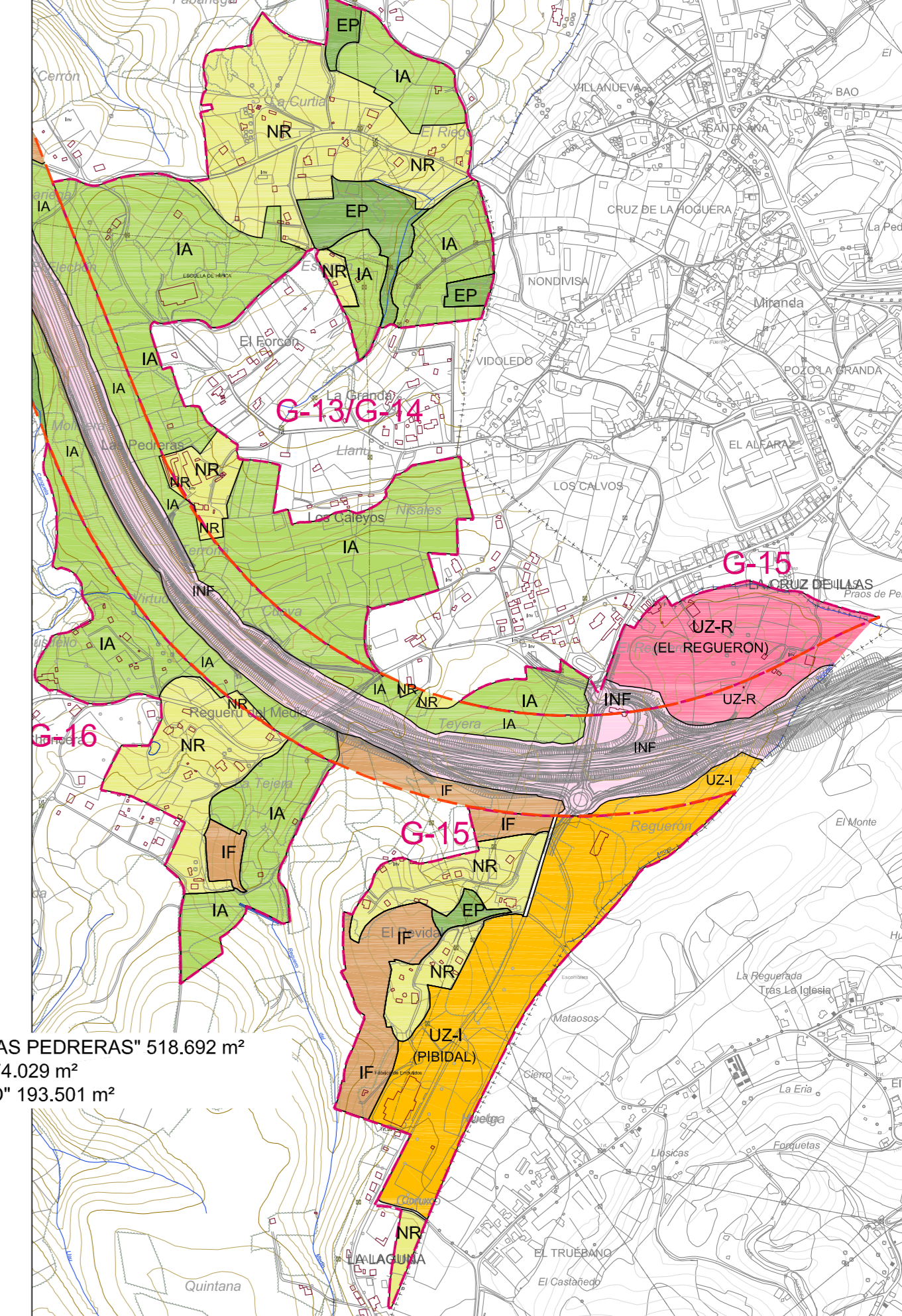
G-12 "EL PEDRISCO" 356.450 m<sup>2</sup>



G-11 "LA BOTERA" 67.659 m<sup>2</sup>



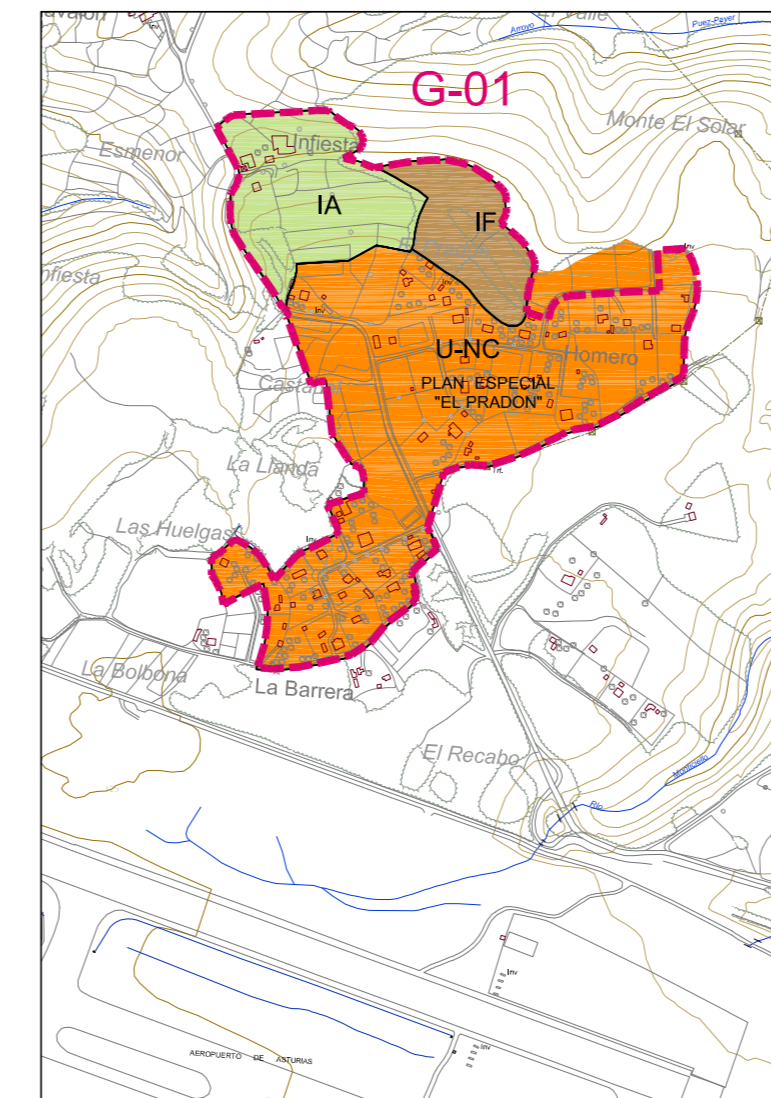
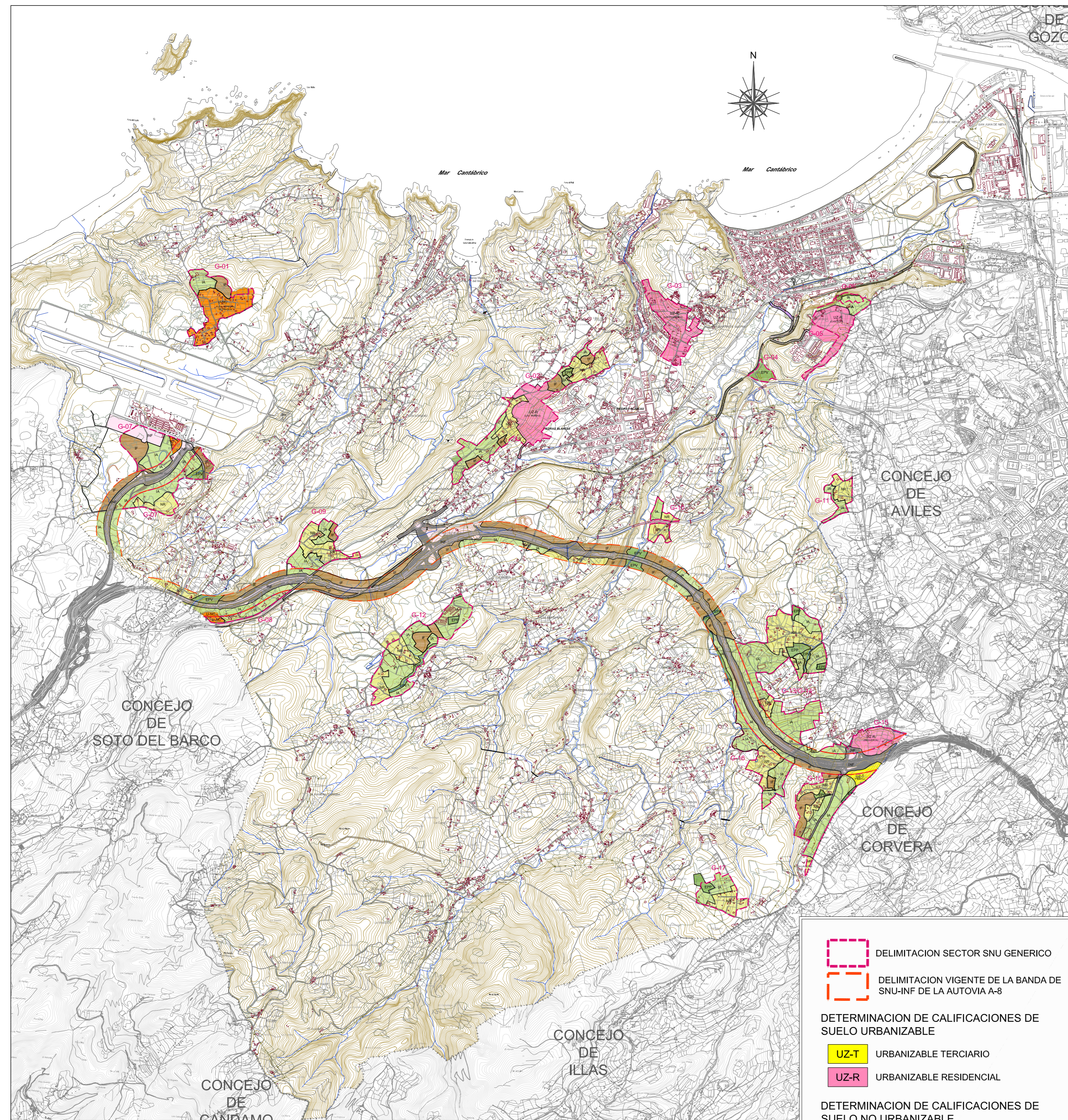
G-17 "LAS HUELGAS" 119.941 m<sup>2</sup>



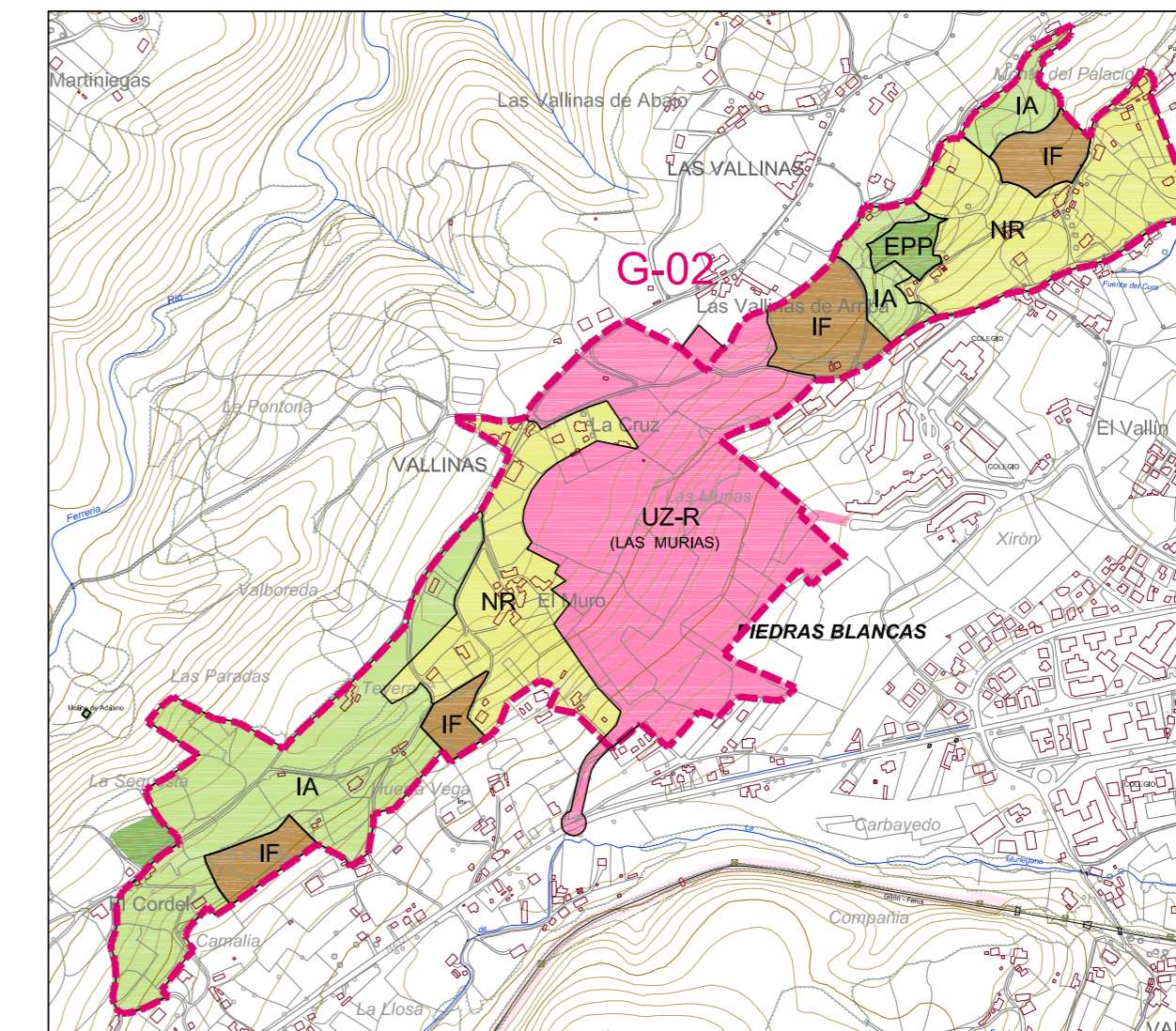
G-13 / G-14 "LA CURTIA" / "LAS PEDRERAS" 518.692 m<sup>2</sup>  
G-15 "LA CRUZ DE ILLAS" 374.029 m<sup>2</sup>  
G-16 "REGUERO DEL MEDIO" 193.501 m<sup>2</sup>

Dib. y. Contab.: CCG 16/03/2012-10:55 2440-2509-0210101\_80.dwg

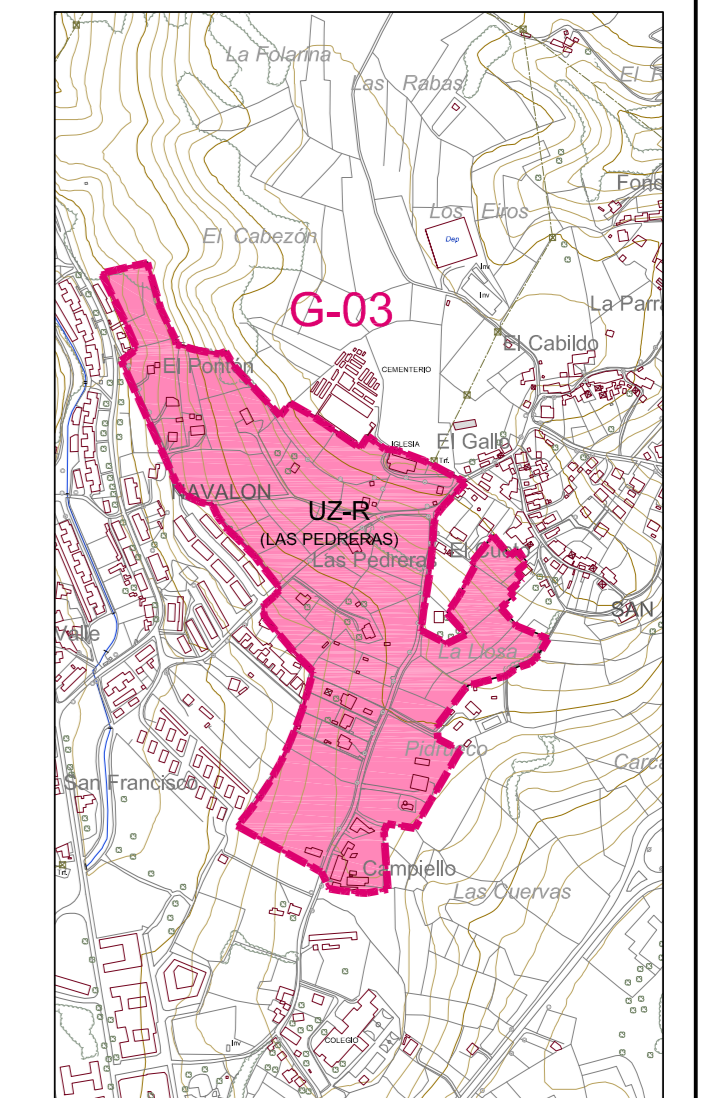




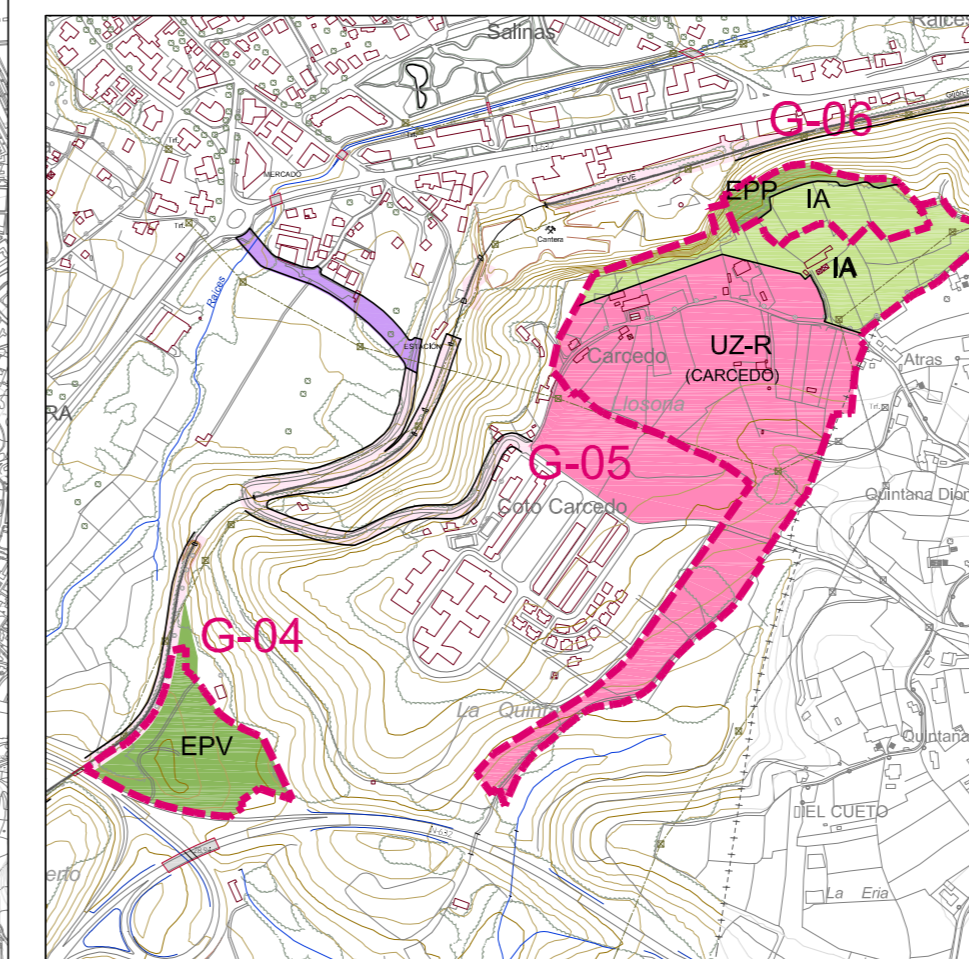
G-01 "EL PRADÓN" 215.832 m<sup>2</sup>



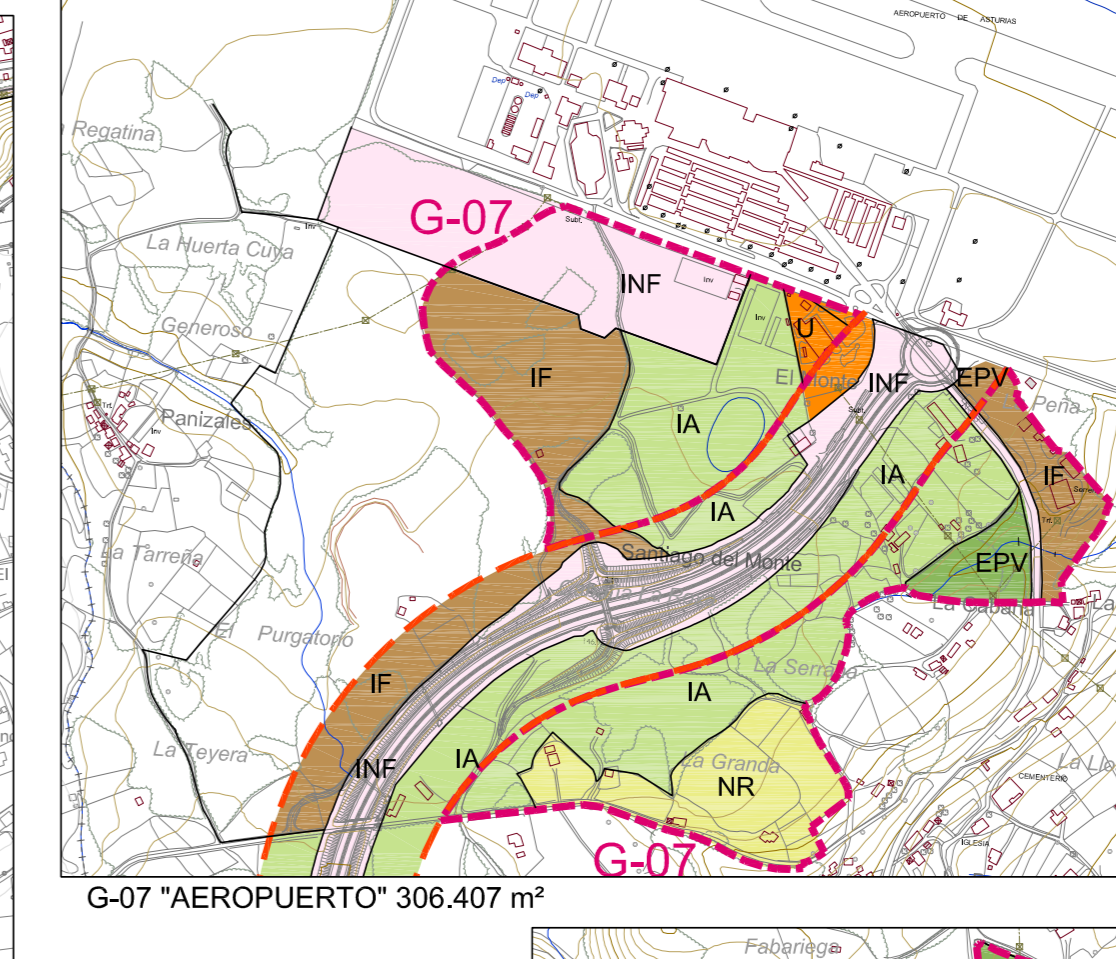
G-02 "EL MURO" 459.131 m<sup>2</sup>



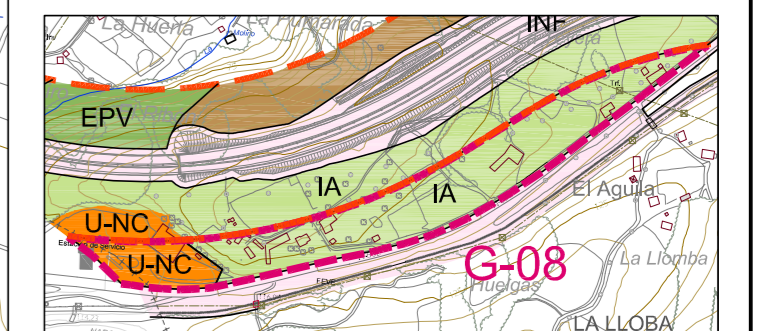
G-03 "S. MARTÍN DE LASPRA" 177.458 m<sup>2</sup>



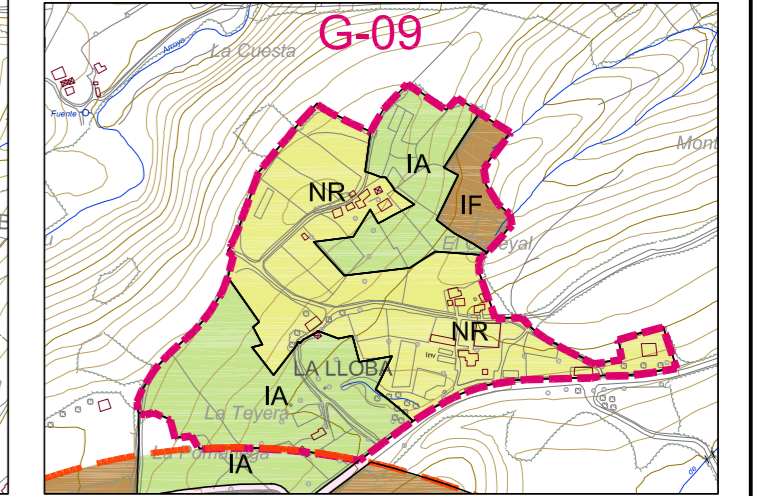
G-04 "LA VEGONA" 25.428 m<sup>2</sup>  
G-05 "CARCEDO" 145.381 m<sup>2</sup>  
G-06 "LA CANTERA" 18.608 m<sup>2</sup>



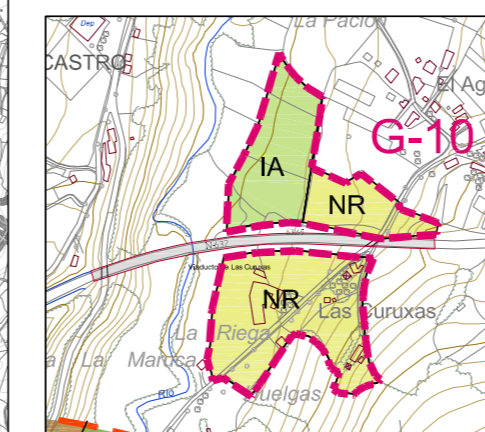
G-07 "AEROPUERTO" 306.407 m<sup>2</sup>



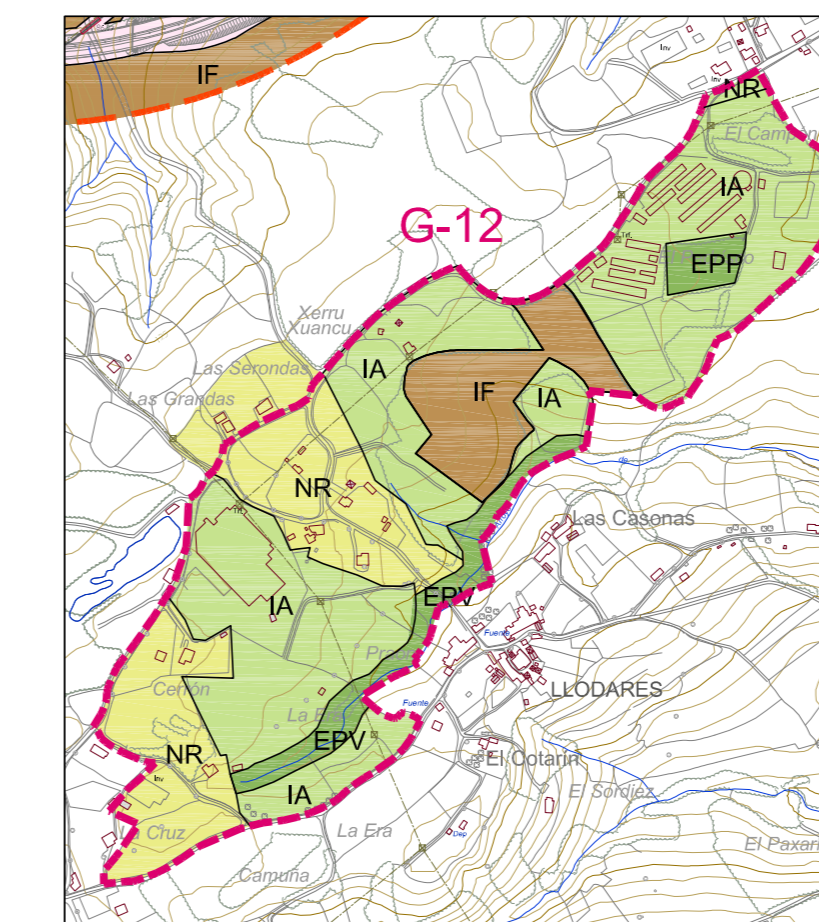
G-08 "EL ÁGUILA" 53.771 m<sup>2</sup>



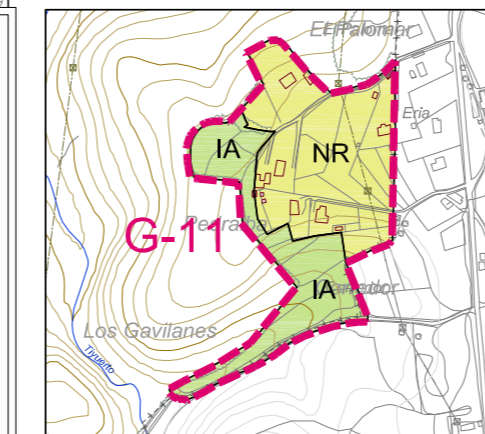
G-09 "LA LLOBA" 168.541 m<sup>2</sup>



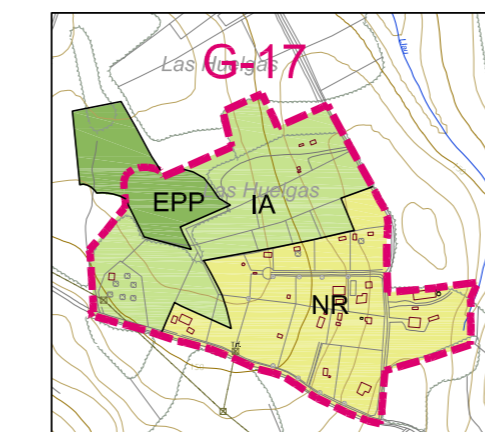
G-10 "LAS CURUXAS" 58.555 m<sup>2</sup>



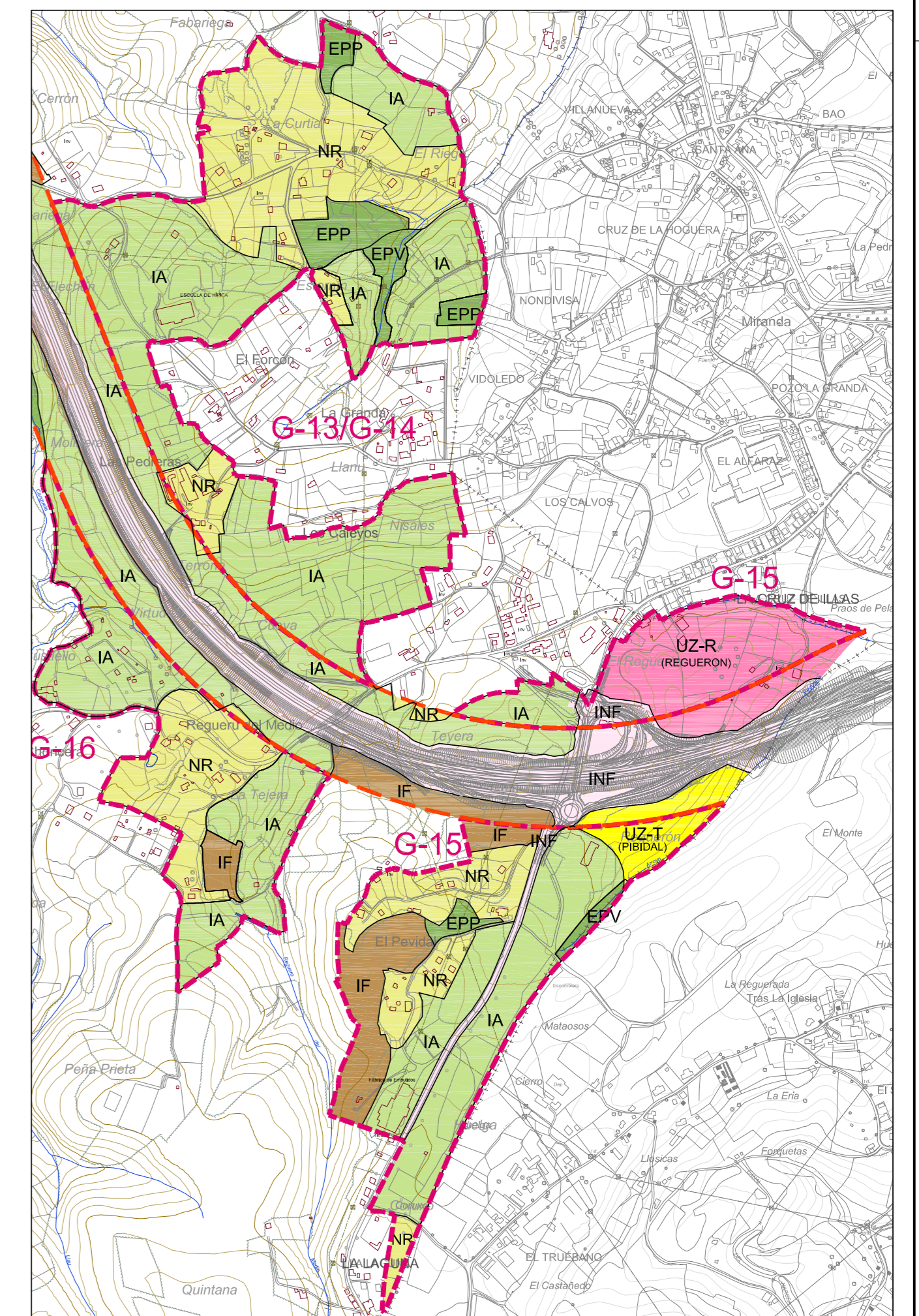
G-12 "EL PEDRISCO" 356.450 m<sup>2</sup>



G-11 "LA BOTERA" 67.659 m<sup>2</sup>



G-17 "LAS HUELGAS" 119.941 m<sup>2</sup>



G-13 / G-14 "LA CURTIA" / "LAS PEDRERAS" 518.692 m<sup>2</sup>  
G-15 "LA CRUZ DE ILLAS" 374.029 m<sup>2</sup>  
G-16 "REGUERO DEL MEDIO" 193.501 m<sup>2</sup>

- DELIMITACION SECTOR SNU GENERICO
- DELIMITACION VIGENTE DE LA BANDA DE SNU-INF DE LA AUTOVIA A-8
- DETERMINACION DE CALIFICACIONES DE SUELO URBANIZABLE**
- UZ-T URBANIZABLE TERCIARIO
- UZ-R URBANIZABLE RESIDENCIAL
- DETERMINACION DE CALIFICACIONES DE SUELO NO URBANIZABLE**
- EPP ESPECIAL PROTECCION PAISAJISTICA
- EPV ESPECIAL PROTECCION DE VEGA
- INF INFRAESTRUCTURAS
- IA INTERES AGRARIO
- IF INTERES FORESTAL
- NR NUCLEO RURAL
- DETERMINACION DE CALIFICACIONES DE SUELO URBANO**
- U URBANO CONSOLIDADO
- U-NC URBANO NO CONSOLIDADO
- SG SISTEMA GENERAL

Dib. y. Contab. - C03 - 16/07/2012 - 10:49 - 2440-2509 - 0310101 - 80.docx